

# Allegro

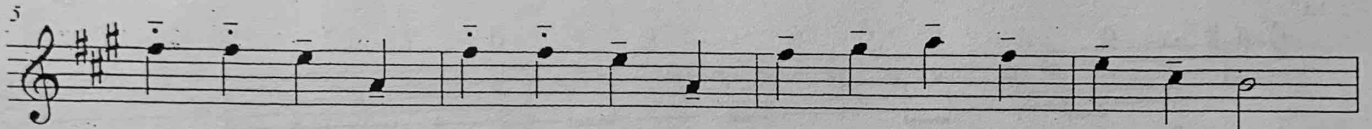
S. Suzuki



*f*

3 3 0 0 1 2 3 1 0 0 3 3 2 2 1 0 1 2 0----

E----- A-----



*p dolce*

1 1 0 0 1 1 0 0 1 2 3 1 0 2 1-----

E----- A E----- A E----- A-----



*f*

3 3 0 0 1 2 3 1 0 0 3 3 2 2 1 0 1 2 0----

E----- A-----